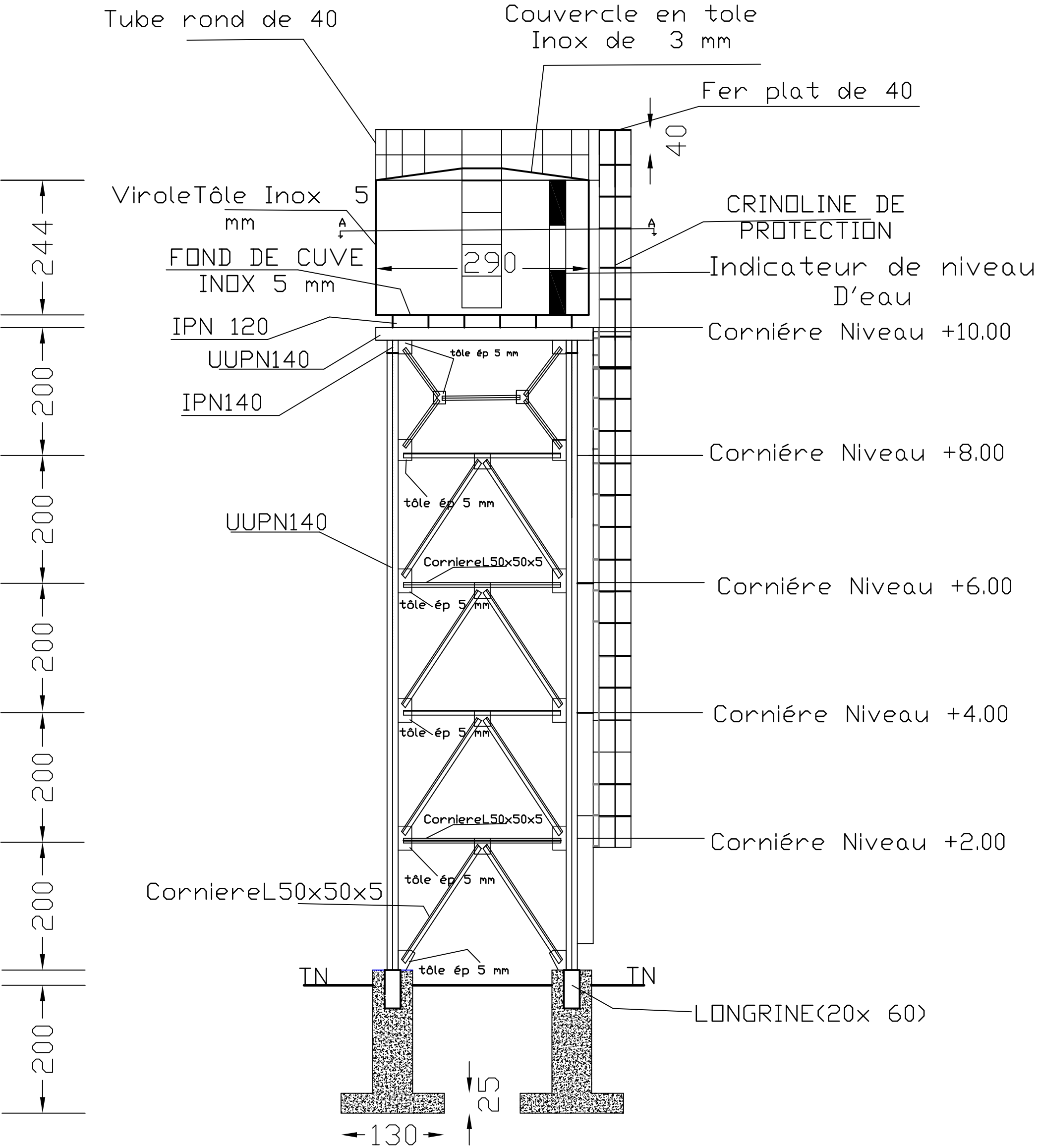



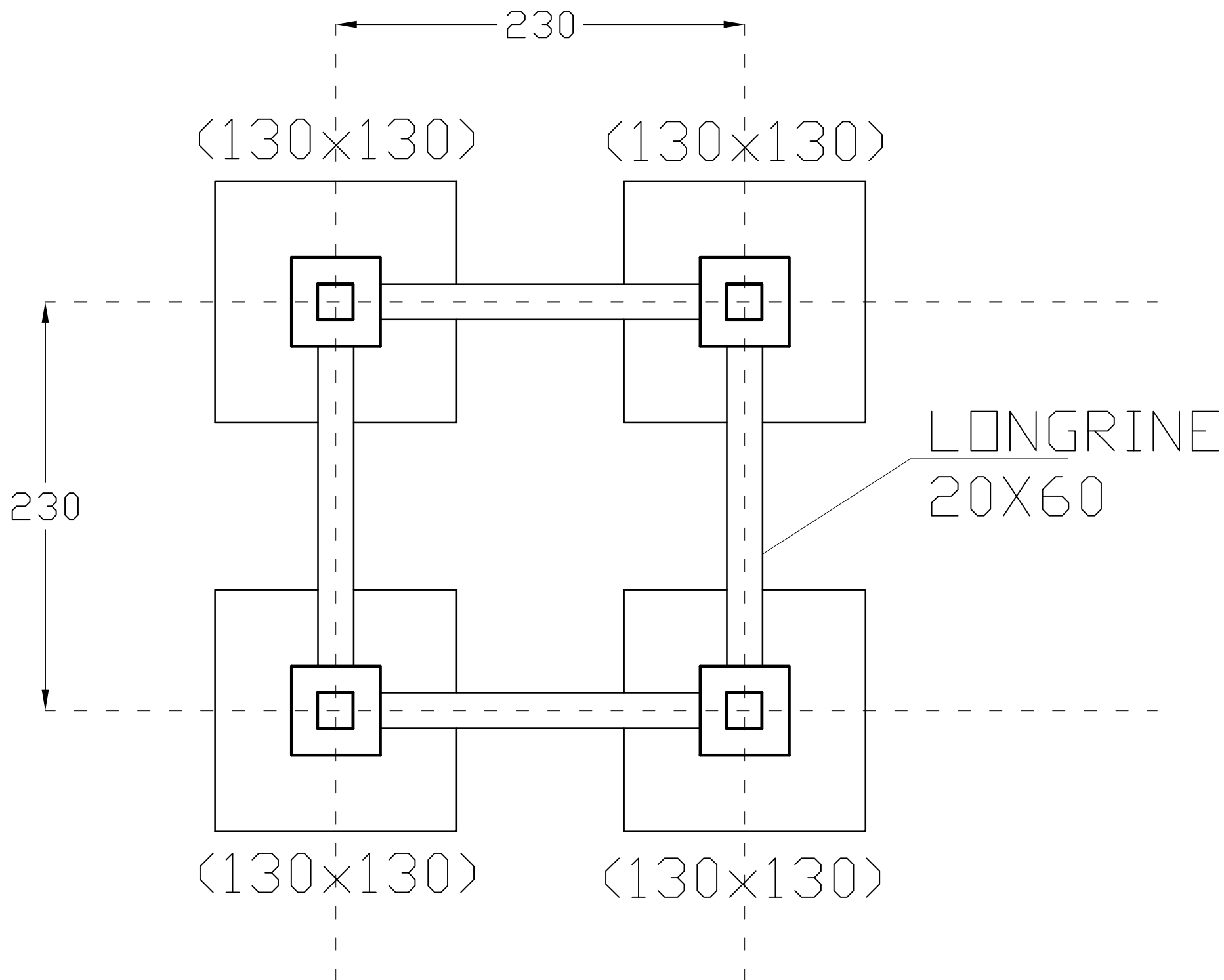


CHATEAU DE 15m3 10 m






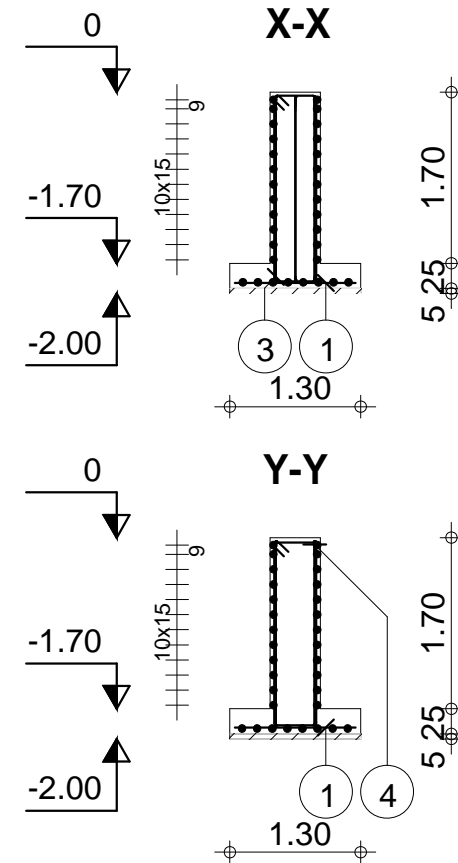
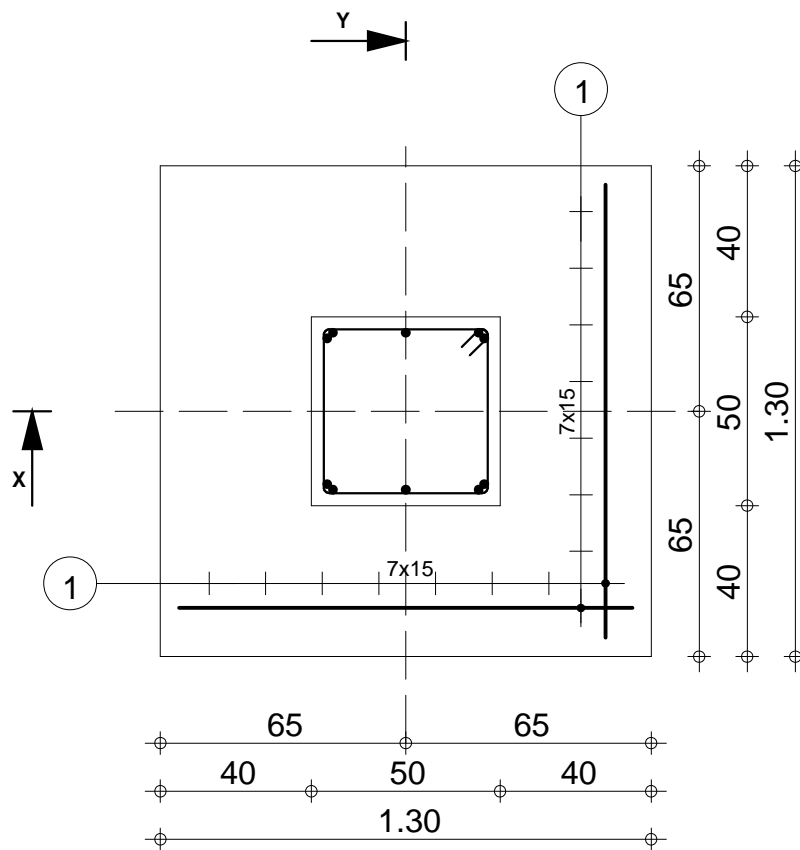
plan d'élévation château

MAITRE D'OUVRAGE ENABEL-ASYPON GMV	FINANCEMENT Union Européenne	MAITRE D'OEUVRE BUREAU ESI	TRAVAUX DE REALISATION D'UN BOIS VILLAGE A SAKIRA DANS LA COMMUNE DE Gothève	
			ECHELLE:	PHASE:APD
			PLAN D'ELEVATION CHATEAU	JUILLET 2025




plan d'implantation

<div>MAITRE D'OUVRAGE</div> <div>ENABEL-ASYPON GMV</div> <div></div>	<div>FINANCEMENT</div> <div>Union Européenne</div> <div></div>	<div>MAITRE D'OEUVRE</div> <div>BUREAU ESI</div> <div></div>	TRAVAUX DE REALISATION D'UN BOIS VILLAGE A SAKIRA DANS LA COMMUNE DE Gothève	
			ECHELLE:	PHASE:APD
			PLAN D'IMPLANTATION	JUILLET 2025



Pos.	Armature	Code	Forme	Pos.	Armature	Code	Forme
①	16HA 8	l=1.20	00	④	2HA 12	l=4.80	31
②	12HA 6	l=1.88	31				
③	3HA 12	l=4.75	31				

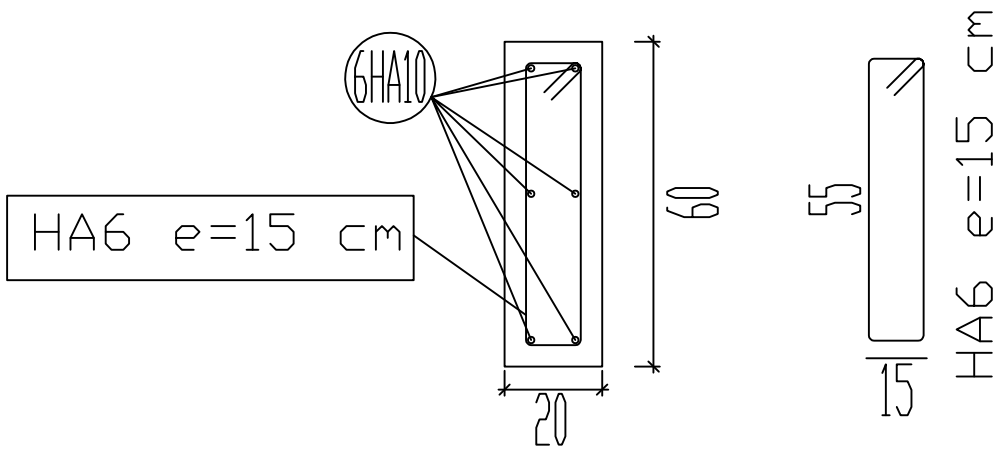
		Tél.		Fax				Acier HA 400 = 7.58 kg	
		Fissuration peu préjudiciable				Béton : BETON = 0.848 m3		Acier HA 400 = 26.2 kg	
	Niveau -2,00 Château 15 m3 - 10 m	Semelle ISOLEE GOTHEYE	Nombre 1		Surface du coffrage = 4.7 m2		Enrobage c1 = 5 cm, c2 = 3 cm		
					Densité = 39.86 kg/ m3				
							Echelle pour la vue 1/20		Page 1/1



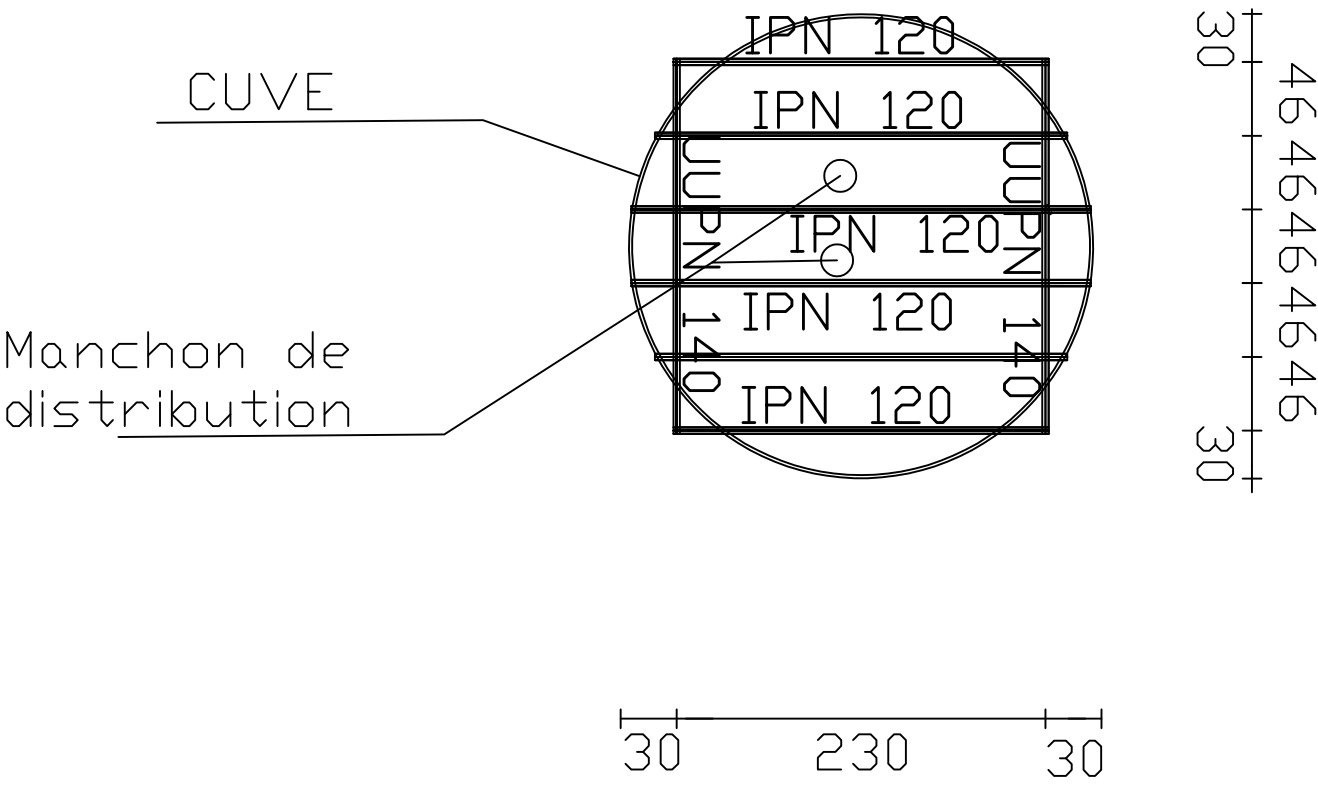
Niveau -2,00

Château 15 m3 - 10 m




Semelle ISOLEE GOTHEYE



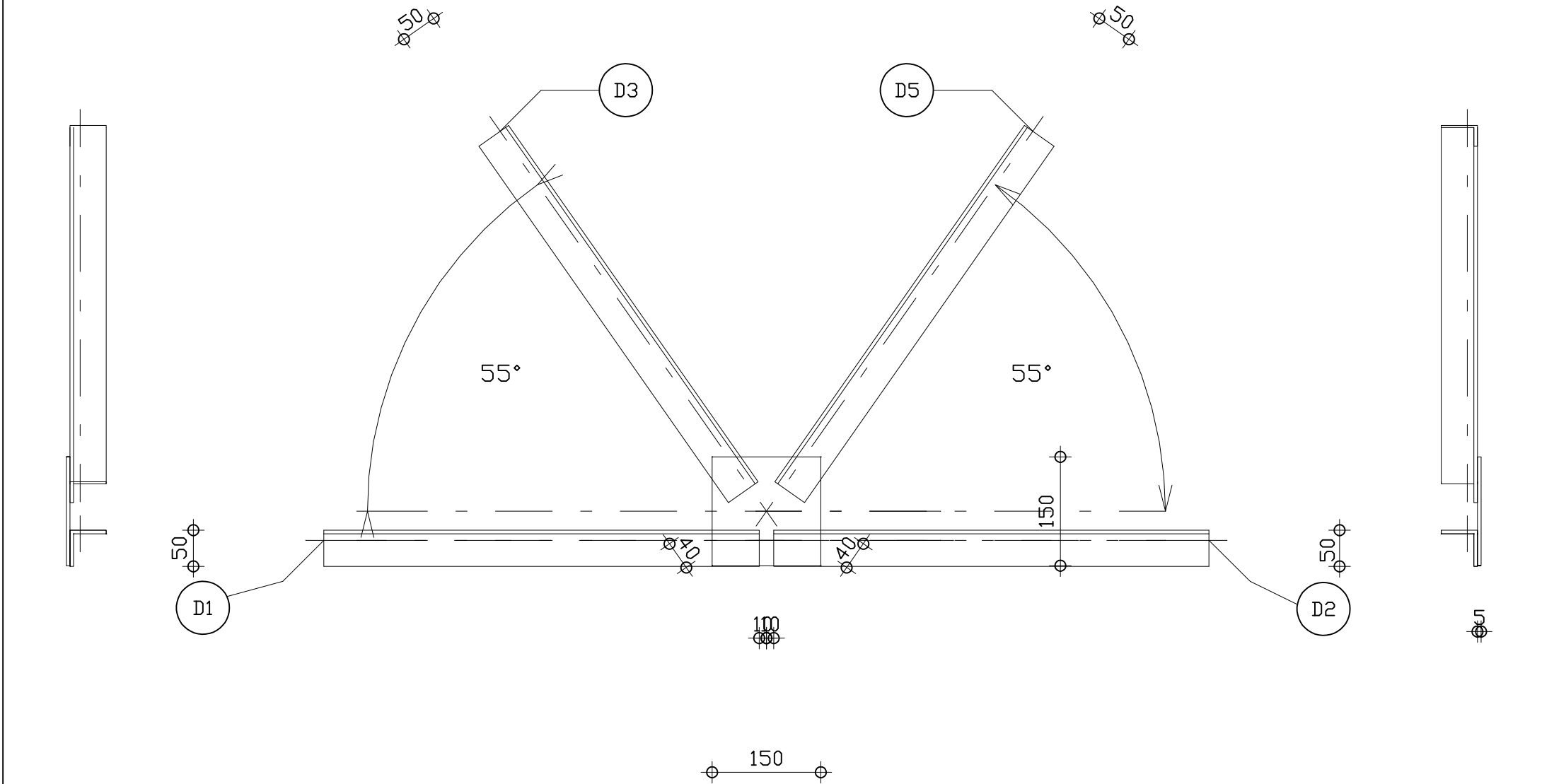
Détail longrine






Detail coup AA

MAITRE D'OUVRAGE ENABEL-ASYPON GMV	FINANCEMENT Union Européenne	MAITRE D'OEUVRE BUREAU ESI	TRAVAUX DE REALISATION D'UN BOIS VILLAGE A SAKIRA DANS LA COMMUNE DE Gothève	
			ECHELLE:	PHASE:APD
			DETAILS COUPE A-A ET LONGRINE	JUILLET 2025

- D1 - CAE 50x5
- D2 - CAE 50x5
- D3 - CAE 50x5
- D5 - CAE 50x5



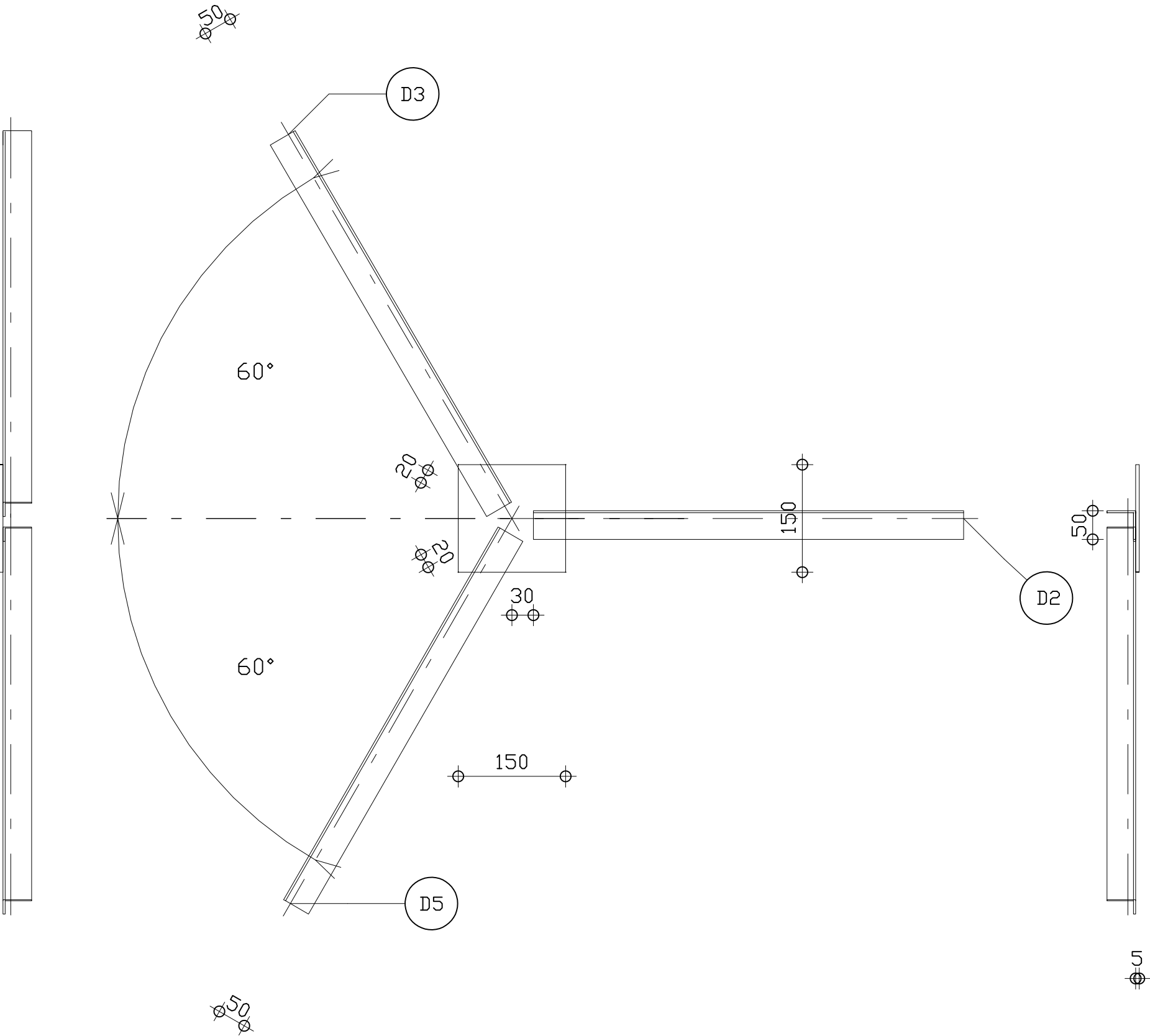
ASSEMBLAGE N°1

MAITRE D'OUVRAGE	FINANCEMENT	MAITRE D'OEUVRE	TRAVAUX DE REALISATION D'UN BOIS VILLAGE A SAKIRA DANS LA COMMUNE DE Gothève	
ENABEL-ASYPON GMV	Union Européenne	BUREAU ESI		
			ECHELLE:	PHASE:APD
			ASSEMBLAGE N°1	JUILLET 2025




D2 - CAE 50x5

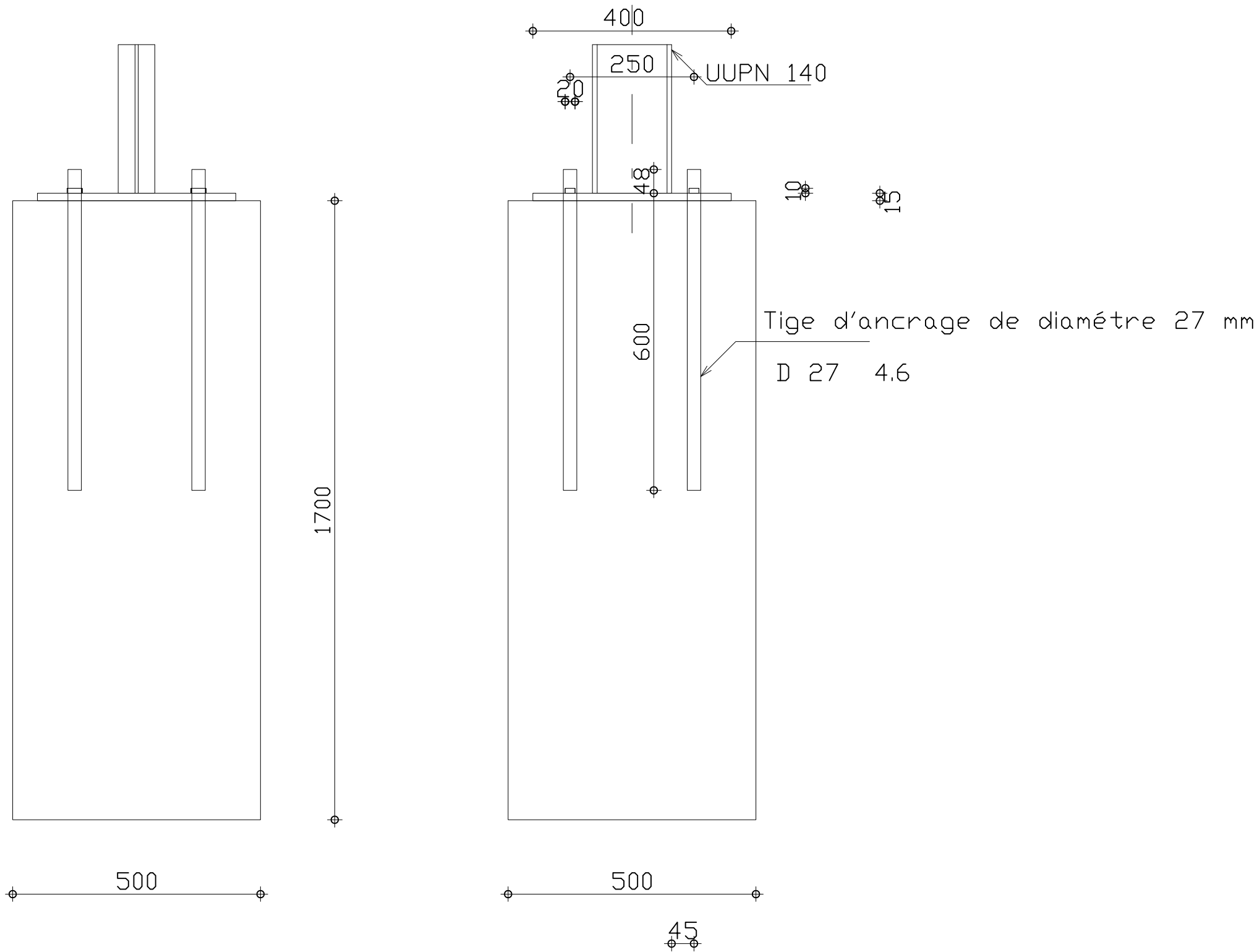
D3 - CAE 50x5

D5 - CAE 50x5

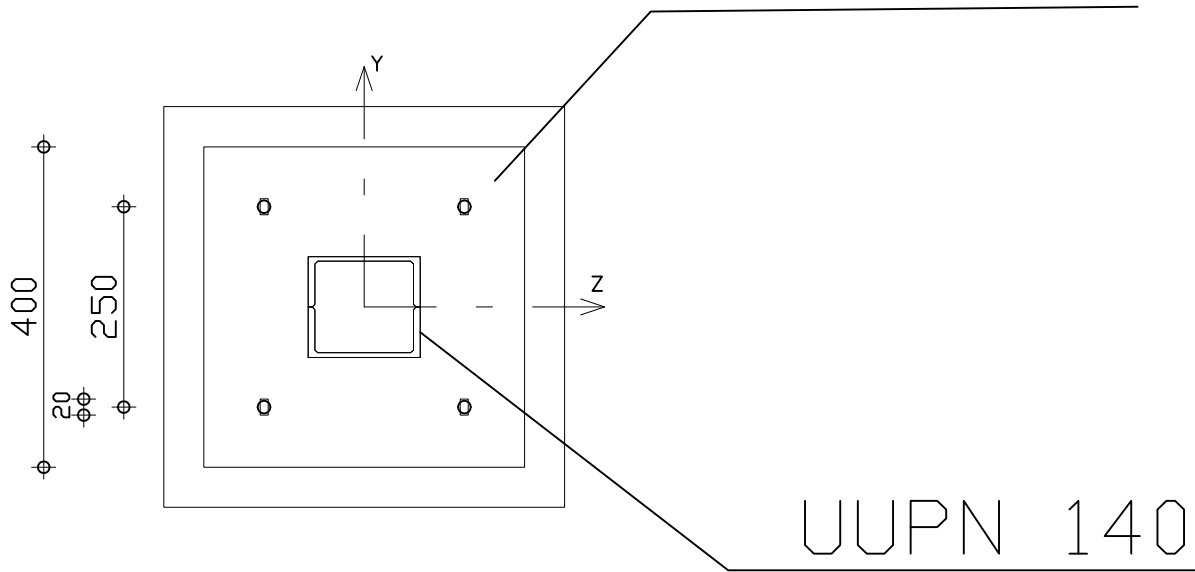


ASSEMBLAGE N°2




MAITRE D'OUVRAGE	FINANCEMENT	MAITRE D'OEUVRE	TRAVAUX DE REALISATION D'UN BOIS VILLAGE A SAKIRA DANS LA COMMUNE DE Gothève	
ENABEL-ASYPON GMV	Union Européenne	BUREAU ESI		
			ECHELLE:	PHASE:APD
			ASSEMBLAGE N°2	JUILLET 2025



Platine de jonction en acier d'épaisseur 15mm



DETAIL L DE FIXATION-POTEAU-PLATINE

MAITRE D'OUVRAGE	FINANCEMENT	MAITRE D'OEUVRE	TRAVAUX DE REALISATION D'UN BOIS VILLAGE A SAKIRA DANS LA COMMUNE DE Gothève	
ENABEL-ASYPON GMV	Union Européenne	BUREAU ESI		
			ECHELLE:	PHASE:APD
			ASSEMBLAGE N°3	JUILLET 2025